

## Komplet - kond. jedinica Embraco Aspera + isparivač KFL

### Komplet uključuje:

- ✓ Otvorenu kondenzacijsku jedinicu Embraco Aspera
- ✓ Isparivač KFL s elektrogrijačima (razmak lamela 5 ili 7 mm)
- ✓ Termoekspanzijski ventil Danfoss
- ✓ Filter-sušać Danfoss
- ✓ Magnetski ventil Castel
- ✓ Kontrolno staklo Castel
- ✓ Presostate Ranco
- ✓ Mikroprocesorski kontroler Dixell ili Eliwell
- ✓ Temperaturne sonde (2 kom)

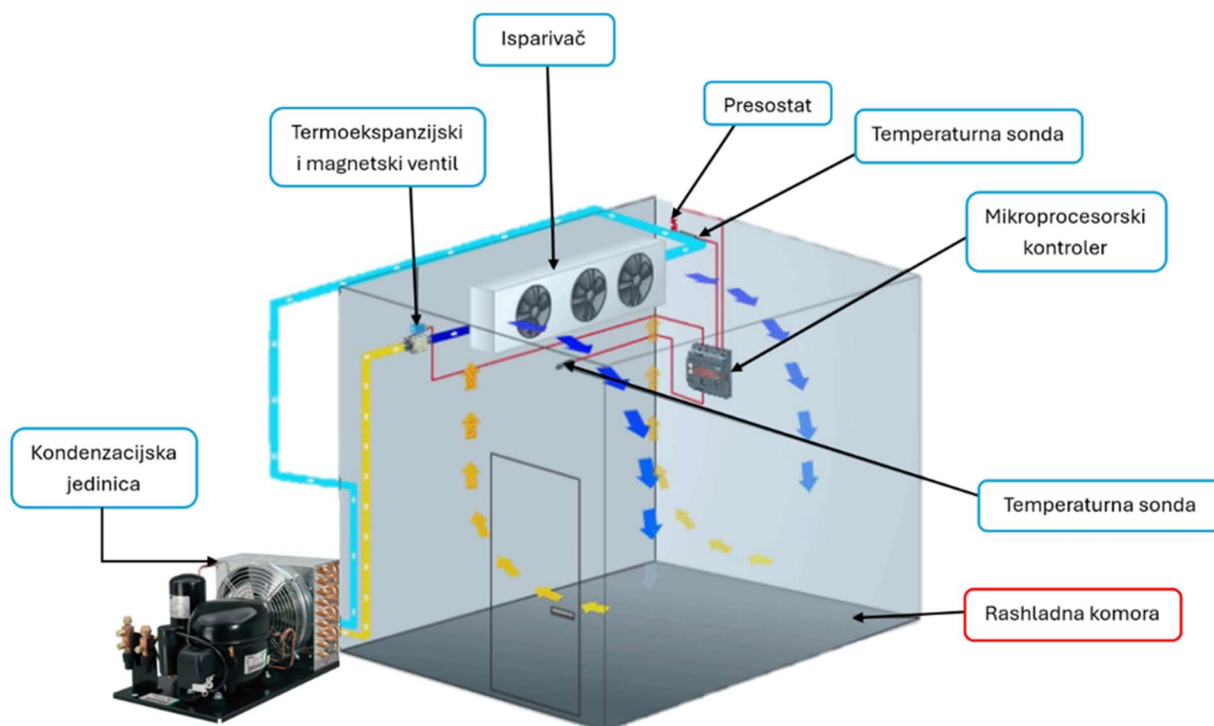


**Danfoss**

**Castel**  
Italian technology

**dixell**  
COPELAND

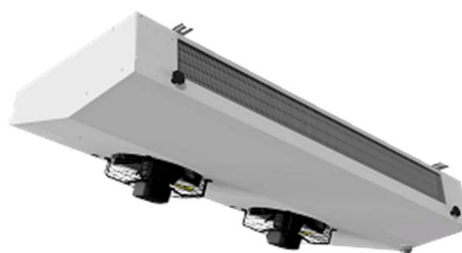
**eliwell**  
by Schneider Electric



Komplet - kond. jedinica Embraco Aspera + isparivač KFL



**embraco**  
Nidec



**KFL**  
**EST**

Raspoloživi kapaciteti:

Šifra kompleta	Kond. jedinica		Temp. u komori	Isparivač	Rashl. kapacitet (W)
			<b>MT</b>		
7KK0100	UNEK6210GK	230V/1PH	2°C	SHS12	653
7KK0110	UNEK6213GK	230V/1PH	2°C	SHS13	880
7KK0120	UNEK6217GK	230V/1PH	2°C	SHS18	1078
7KK0130	UNT 6222GK	230V/1PH	2°C	SHS22	1325
7KK0140	UNT 6226GK	230V/1PH	2°C	SHS26	1710
7KK0150	UNJ 9232GK	230V/1PH	2°C	SHS26	1901
7KK0160	UNJ 9238GK	230V/1PH	2°C	SHS32	2364
7KK0165	UNJX 6250GK	230V/1PH	2°C	LTE 205 S4*	3110
7KK0170	UNJX6250GS	380V/3PH	2°C	FHA41	3110
7KK0180	USE6015GS	380V/3PH	2°C	FHA53	3600
7KK0190	USE6018GS	380V/3PH	2°C	FHA53	4200
7KK0200	USE6021GS	380V/3PH	2°C	FHA79	4690
			<b>LT</b>		
7KK0210	UNJ2192GJ	230V/1PH	-20°C	F27HC16	708
7KK0220	UNJ2212GK	230V/1PH	-20°C	F27HC16	883
7KK0225	UNJX2219GK	230V/1PH	-20°C	CCEH 251 L6*	1150
7KK0230	UNJX2219GS	380V/3PH	-20°C	F27HC23	1150
7KK0240	USE2006GS	380V/3PH	-20°C	F27HC23	1200
7KK0250	USE2008GS	380V/3PH	-20°C	F27HC31	1510

\*Isparivači proizvođača KFL

\*\*Napomena: Slike služe samo kao ilustracija.