

FR6CL

LBP/MBP Compressor

R404A/R507

220-240V 50Hz

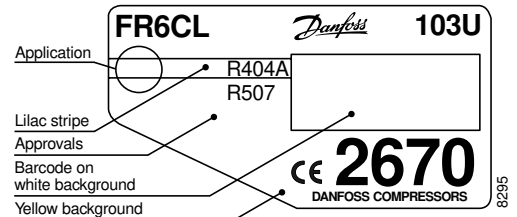
Data Sheet (Replaces CF.53.A1.02)

General

Compressor	FR6CL
Code number	103U2670

Application

Application		LBP/MBP
Evaporating temperature range	°C	-45 to -5
Voltage range	V/Hz	198 - 254 /50
Motor type		CSIR
Max. ambient temperature	°C	38
Comp. cooling at ambient temp.	32°C	F ₂
	38°C	F ₂



- S = Static cooling normally sufficient
- O = Oil cooling
- F₁ = Fan cooling 1.5 m/s
(compressor compartment temperature equal to ambient temperature)
- F₂ = Fan cooling 3.0 m/s necessary

Design

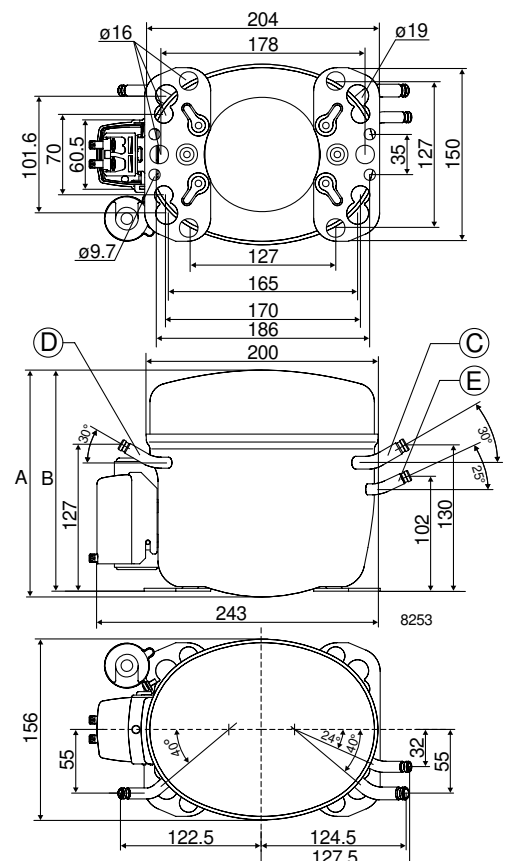
Displacement	cm ³	6.23
Oil quantity	cm ³	450
Maximum refrigerant charge	g	850
Free gas vol. in compressor	cm ³	1350
Weight without electrical equipment	kg	10.5

Motor

Motor size	watt	215
LRA (rated after 4 sec. UL984) HST	A	8.2
Cut-in current HST	A	8.2
Resistance, main and start winding (25°C)	Ω	8.9/12.0
Approvals		EN 60335-2-34

Dimensions

Height	mm	A	196
		B	191
Suction connector	location/I.D. mm	C	8.2 ±0.09
Process connector	location/I.D. mm	D	6.2 ±0.09
Discharge connector	location/I.D. mm	E	6.2 ±0.09
Compressors on a pallet	pcs.		80



Capacity (EN 12900/CECOMAF)
watt

Comp. °C	-45	-40	-35	-30	-25	-23.3	-20	-15	-10	-5
FR6CL	77	108	145	189	243	263	307	383	473	578

Capacity (ASHRAE)
watt

Comp. °C	-45	-40	-35	-30	-25	-23.3	-20	-15	-10	-5
FR6CL	90	125	168	220	283	307	358	447	553	676

Power consumption
watt

Comp. °C	-45	-40	-35	-30	-25	-23.3	-20	-15	-10	-5
FR6CL	126	152	180	210	242	253	276	313	353	395

Current consumption
A

Comp. °C	-45	-40	-35	-30	-25	-23.3	-20	-15	-10	-5
FR6CL	1.13	1.18	1.26	1.35	1.46	1.51	1.60	1.75	1.91	2.09

COP (EN 12900/CECOMAF)
W/W

Comp. °C	-45	-40	-35	-30	-25	-23.3	-20	-15	-10	-5
FR6CL	0.61	0.71	0.80	0.90	1.00	1.04	1.11	1.22	1.34	1.47

COP (ASHRAE)
W/W

Comp. °C	-45	-40	-35	-30	-25	-23.3	-20	-15	-10	-5
FR6CL	0.71	0.82	0.94	1.05	1.17	1.21	1.29	1.43	1.57	1.71

Test conditions

EN 12900/CECOMAF

ASHRAE

Condensing temperature

45°C

45°C

Ambient and suction gas temp.

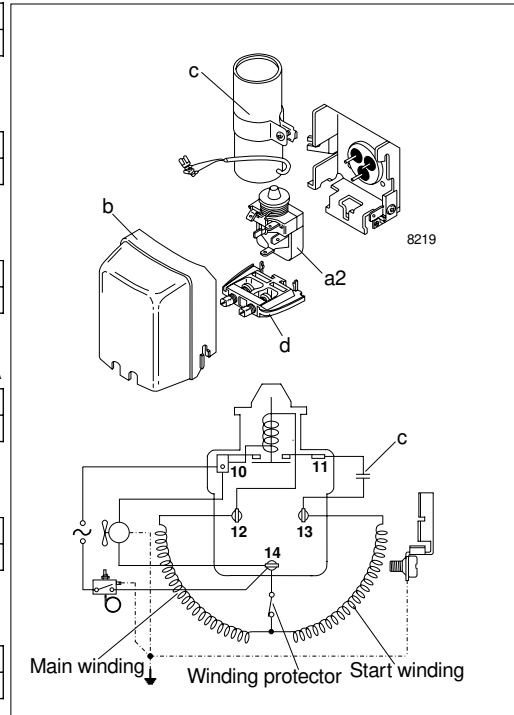
32°C

32°C

Liquid temperature

45°C

32°C

 Fan cooling F₂, 220V 50Hz

Accessories

Devices	Fig.	FR6CL
Starting relay	a2	117U6015
Cover	b	103N2010
Starting capacitor 80 µF	c	117U5015
Cord relief	d	103N1010
Mounting accessories		
Bolt joint for one compressor		118-1917
Bolt joint in quantities		118-1918
Snap-on in quantities		118-1919

Danfoss can accept no responsibility for possible errors in catalogues, brochures and other printed material. Danfoss reserves the right to alter its products without notice. This also applies to products already on order provided that such alterations can be made without subsequential changes being necessary in specifications already agreed. All trademarks in this material are property of the respective companies. Danfoss and the Danfoss logotype are trademarks of Danfoss A/S. All rights reserved.